



By Appointment to: HM The Queen  
Manufacturer of Men's Footwear  
Loake Bros. Ltd

**Loake**  
S H O E M A K E R S

2021

## THE NEXT STEP - AFFORDABLE HANDCRAFTED SHOES, BUILT TO LAST, AND SUITABLE FOR ANY OCCASION...

The Loake family business has been making traditional shoes since 1880. Today, over 140 years later, the association with fine handmade footwear lives on.

The Goodyear Welted construction for which we are renowned is an intricate process with each pair taking up to eight weeks to complete. We estimate that over 50 million pairs of Loake Goodyear Welted boots and shoes have been produced since we began.

We still believe that there is no finer way to make a gentleman's shoe and only the very best materials and highest levels of skill are used. We now sell our shoes in over 60 countries and have become a firm favourite with discerning customers worldwide.

However, this year, with global events re-shaping our everyday routines and creating changing needs with a changing world, we are all in the process of taking 'The Next Step'.

At Loake, we are also evolving and taking our next step, complementing our range of quality handcrafted formal footwear, traditional designs and best-selling classics, with an expanded range of luxury casuals, featuring a variety of constructions and uncompromised design, and enabling us to offer a complete wardrobe of shoes, suitable for any occasion.

Our aim is that whether the next step is a return to the office or working from home; a step towards those next personal and professional milestones, or simply, towards a more handcrafted, sustainable purchase that is built to last and expertly engineered, with longevity in mind, 'The Next Step' for all, will always be in a pair of Loake shoes...



*Andrew Cory*

ANDREW CORY  
*Managing Director*



THIS PREMIUM RANGE REFLECTS THE WAY THE COMPANY FIRST MANUFACTURED ITS FINE, HANDMADE SHOES MORE THAN 140 YEARS AGO.

# Loake 1880

Combining bench-made shoemaking techniques with the highest quality materials, this is a collection to which many shoemakers can only aspire.

Loake 1880 shoes are examples of Goodyear Welted footwear at its finest and are made in our Northamptonshire factory.



**ALDWYCH**  
*Leather Sole - F Fitting*

Goodyear Welted Leather Soles, Fully Leather Lined, Leather Insoles, Last Capital, F Fitting  
Sizes 5 to 13 inc half sizes  
Dark Brown Suede, Mahogany Burnished Calf, Black Calf & Dark Brown Burnished Calf



**ALDWYCH**  
*Dainite Sole - F Fitting*

Goodyear Welted Dainite Rubber Soles, Fully Leather Lined, Leather Insoles, Last Capital, F Fitting  
Sizes 5 to 13 inc half sizes  
Black Calf & Brown Burnished Calf

**ALDWYCH**  
*Dainite Sole - G Fitting*

Goodyear Welted Dainite Rubber Soles, Fully Leather Lined, Leather Insoles, Last Capital, G Fitting  
Sizes 6 to 11 inc half sizes, 12 & 13  
Black Calf & Mahogany Burnished Calf

*Featured Style*  
ALDWYCH in BLACK CALF  
*See Opposite*

# Loake1880



**STRAND**

Goodyear Welted Leather Soles,  
Fully Leather Lined, Leather Insoles, Last Capital, F Fitting  
Sizes 5 to 13 inc half sizes  
*Black Calf, Mahogany Burnished Calf  
& Burgundy Burnished Calf*



**FLEET**

Goodyear Welted Shadow Rubber Soles,  
Fully Leather Lined, Leather Insoles, Last Capital, F Fitting  
Sizes 6 to 11 inc half sizes, 12 & 13  
*Black Calf, Dark Brown Burnished Calf  
& Dark Brown Suede*



**CANNON**

Goodyear Welted Leather Soles,  
Fully Leather Lined, Leather Insoles, Last Capital, F Fitting  
Sizes 5 to 13 inc half sizes  
*Dark Brown Burnished Calf & Black Calf*



**MEDWAY**

Goodyear Welted Leather Soles,  
Fully Leather Lined, Leather Insoles, Last River, F Fitting  
Sizes 6 to 11 inc half sizes, 12 & 13  
*Black Calf & Polo Suede*

*A Wingtip Oxford is a simple yet elegant choice*

**BUCKINGHAM**

Goodyear Welted Leather Soles,  
Fully Leather Lined, Leather Insoles, Last Capital, F Fitting  
Sizes 5 to 13 inc half sizes

*Black Calf, Brown Burnished Calf,  
Dark Brown Burnished Calf & Polo Suede*



# Loake1880



**LAXFORD**

Goodyear Welted Leather Soles,  
Fully Leather Lined, Leather Insoles, Last River, F Fitting  
Sizes 6 to 13 inc half sizes  
*Black Calf*



**EVANS**

Goodyear Welted Leather Soles,  
Fully Leather Lined, Leather Insoles, Last Bullet, F Fitting  
Sizes 6 to 11 inc half sizes, 12 & 13  
*Conker Burnished Calf, Dark Brown Burnished Calf  
& Black Calf*



*Featured Style  
EVANS in DARK BROWN BURNISHED CALF  
See Above*



*Featured Style*  
**RUSSELL in MAHOGANY BURNISHED CALF**  
*See Below*

## Loake1880



*\*New Colour*

### CHATSWORTH

Goodyear Welted Dainite Rubber Soles, Fully Leather Lined, Leather Insoles, Last Jockey, G Fitting  
 Sizes 6 to 13 inc half sizes  
 \*Tobacco Suede, Dark Brown Suede, Brown Suede, Brown Waxy Leather, Black Calf, Black Suede,  
 Rust Brown Waxy Suede & \*Dark Brown Waxy Leather



### PIMLICO

Goodyear Welted Dainite Rubber Soles, Fully Leather Lined, Leather Insoles, Last Capital, F Fitting  
 Sizes 5 to 13 inc half sizes  
 Black Calf, Dark Brown Burnished Calf, Dark Brown Suede, Brown Suede & Green Suede



### RUSSELL

Goodyear Welted Leather Soles, Fully Leather Lined, Leather Insoles, Last College, F Fitting  
 Sizes 6 to 11 inc half sizes, 12 & 13  
 Mahogany Burnished Calf, Black Calf, Polo Suede & Dark Brown Suede



### RIVINGTON *(New Style)*

Goodyear Welted Crepe Soles, Fully Leather Lined, Leather Insoles, Last O26, G Fitting  
 Sizes 6 to 11 inc half sizes & 12  
 Brown Suede, Navy Suede & Tan Suede



### LYTHAM

Goodyear Welted Rubber Soles, Fully Leather Lined, Leather Insoles, Last Bullet, F Fitting  
 Sizes 6 to 11 inc half sizes, 12 & 13  
 Oxblood Grain Burnished Calf

## Loake1880

**CHESTER***Dainite Sole*

Goodyear Welted Dainite Rubber Soles,  
Fully Leather Lined, Leather Insoles, Last O24, F Fitting  
Sizes 6 to 13 inc half sizes

*Brown Chromexcel Leather, Mahogany Burnished Calf  
& Tan Burnished Calf*

**CHESTER***Leather Sole*

Goodyear Welted Double Leather Soles,  
Fully Leather Lined, Leather Insoles, Last O24, F Fitting  
Sizes 6 to 13 inc half sizes

*Tan Burnished Calf*

**BADMINTON**

Goodyear Welted Dainite Rubber Soles,  
Fully Leather Lined, Leather Insoles, Last O26, G Fitting  
Sizes 6 to 11 inc half sizes, 12 & 13

*Dark Brown Fine Grain Burnished Calf  
& Mahogany Grain Burnished Calf*

**EDWARD**

Goodyear Welted Victory Rubber Soles,  
Fully Leather Lined, Leather Insoles, Last Pennine, G Fitting  
Sizes 6 to 12 inc half sizes & 13

*Tan Burnished Calf*

**BIRKDALE**

Goodyear Welted Rubber Soles,  
Fully Leather Lined, Leather Insoles, Last Bullet, F Fitting  
Sizes 6 to 11 inc half sizes, 12 & 13

*Conker Burnished Calf & Black Calf*

**TROON**

Goodyear Welted Rubber Soles,  
Fully Leather Lined, Leather Insoles, Last Bullet, F Fitting  
Sizes 6 to 11 inc half sizes, 12 & 13

*Deep Rosewood Grain Burnished Calf & Brown Suede*

## Loake1880

**BEDALE**

Goodyear Welted Victory Rubber Soles, Fully Leather Lined, Leather Insoles, Last Pennine, G Fitting  
Sizes 6 to 13 inc half sizes

*Black Calf, Tan Burnished Calf, Oxblood Grain Burnished Calf, Dark Brown Waxy Suede & Brown Burnished Calf*

**GLENDALE**

Goodyear Welted Commando Rubber Soles,  
Fully Leather Lined, Leather Insoles, Last Pennine, G Fitting  
Sizes 6 to 11 inc half sizes & 12

*Conker Burnished Calf*

**KESWICK**

Goodyear Welted Commando Rubber Soles,  
Fully Leather Lined, Leather Insoles, Last O24, F Fitting  
Sizes 6 to 11 inc half sizes, 12 & 13

*Deep Tan Grain Burnished Calf*

**BURFORD**

Goodyear Welted Dainite Rubber Soles,  
Fully Leather Lined, Leather Insoles, Last O24, F Fitting  
Sizes 6 to 11 inc half sizes & 12

*Tan Burnished Calf*

**WOLF**

Goodyear Welted Dainite Rubber Soles,  
Sheep Wool Lined Throughout, Last O24, F Fitting  
Sizes 6 to 11 inc half sizes & 12

*Tan Burnished Calf*

# Loake1880



## SEDBERGH

Goodyear Welted Commando Rubber Soles, Fully Leather Lined, Leather Insoles, Last 026, G Fitting  
Sizes 6 to 11 inc half sizes, 12 & 13

*Black Grain Calf & Dark Brown Grain Burnished Calf*



## ROEHAMPTON

Goodyear Welted Victory Rubber Soles,  
Fully Leather Lined, Leather Insoles, Last Capital, F Fitting  
Sizes 6 to 11 inc half sizes & 12

*Oxblood Grain Burnished Calf,  
Dark Brown Burnished Calf & Black Calf*



## HEBDEN

Goodyear Welted Victory Rubber Soles,  
Fully Leather Lined, Leather Insoles, Last Pennine, G Fitting  
Sizes 7 to 11 inc half sizes & 12

*Brown Chromexcel Leather, Brown Burnished Suede  
& Black Waxy Calf*

*A Premium Lace Up Boot with Hiker  
Ski-Hook Detailing*

## HIKER

Goodyear Welted Commando Rubber Soles,  
Fully Leather Lined, Leather Insoles, Last 024, F Fitting  
Sizes 7 to 11 inc half sizes

*Oxblood Grain Burnished Calf & Brown Burnished Suede*



*Featured Style*  
SEDBERGH *in* DARK BROWN GRAIN BURNISHED CALF

*See Opposite*

A COMPREHENSIVE COLLECTION OF HANDSOME, COMFORTABLE FOOTWEAR, INCLUDING TRADITIONAL LOAKE DESIGNS ALONGSIDE SOME OF OUR BEST-SELLING CLASSICS.

**Loake**  
SHOEMAKERS

All Loake Shoemakers styles are made in our Northamptonshire factory using the Goodyear Welted construction.

Every pair of Loake Shoemakers shoes is supplied with a cleaning cloth to help you keep your shoes in pristine condition.



SMITH

Goodyear Welted Leather Soles,  
Leather Insoles, Last Matrix, F Fitting  
Sizes 6 to 13 inc half sizes  
*Black Polished Leather*



JONES

Goodyear Welted Leather Soles,  
Leather Insoles, Last Matrix, F Fitting  
Sizes 6 to 12.5 inc half sizes  
*Black Polished Leather*



806

Goodyear Welted Loake Rubber Soles,  
Fully Leather Lined, Leather Insoles, Last Claridge, F Fitting  
Sizes 6 to 13 inc half sizes  
*Black Polished Leather*



747

Goodyear Welted Leather Soles,  
Fully Leather Lined, Leather Insoles, Last 3625, F Fitting  
Sizes 5 to 13 inc half sizes  
*Black Polished Leather*




**ELGIN**

Goodyear Welted Leather Soles,  
 Fully Leather Lined, Leather Insoles, Last Chancery, G Fitting  
 Sizes 6 to 13 inc half sizes  
 Black Polished Leather


**WADHAM**

Goodyear Welted Leather Soles, Fully Leather Lined,  
 Comfort Leather Insoles, Last Chancery, G Fitting  
 Sizes 6 to 11 inc half sizes, 12 & 13  
 Black Calf & Dark Brown Burnished Calf


**SOVEREIGN**

Goodyear Welted Loake Rubber Soles,  
 Fully Leather Lined, Leather Insoles, Last 1639, F Fitting  
 Sizes 6 to 13 inc half sizes  
 Black Polished Leather


**ROYAL**

Goodyear Welted Double Leather Soles,  
 Fully Leather Lined, Leather Insoles, Last 1639, F Fitting  
 Sizes 6 to 13 inc half sizes  
 Oxblood Polished Leather & Black Polished Leather


**GABLE**

Goodyear Welted Loake Rubber Soles,  
 Fully Leather Lined, Leather Insoles, Last Claridge, G Fitting  
 Sizes 6 to 11 inc half sizes & 12  
 Black Calf & Dark Brown Burnished Calf


**EPSOM**

Goodyear Welted Commando Rubber Soles,  
 Fully Leather Lined, Leather Insoles, Last O24, F Fitting  
 Sizes 6 to 13 inc half sizes  
 Brown Waxy Leather


**290**

Goodyear Welted Leather Soles,  
 Part Leather Lined, Leather Insoles, Last O10, F Fitting  
 Sizes 6 to 13 inc half sizes  
 Black Polished Leather


**BLENHEIM**

Goodyear Welted Loake Rubber Soles,  
 Fully Leather Lined, Leather Insoles, Last O10, F Fitting  
 Sizes 6 to 13 inc half sizes  
 Brown Waxy Leather & Black Waxy Leather


**WAVERLEY**

Goodyear Welted Loake Rubber Soles,  
 Fully Leather Lined, Leather Insoles, Last 1639, F Fitting  
 Sizes 5 to 13 inc half sizes  
 Black Polished Leather


**771**

Goodyear Welted Double Leather Soles,  
 Fully Leather Lined, Leather Insoles, Last 3625, F Fitting  
 Sizes 5 to 13 inc half sizes  
 Black Polished Leather & Burgundy Polished Leather

*Ladies that Loake*
**CHATTERLEY**

Goodyear Welted Loake Rubber Soles,  
 Fully Leather Lined, Leather Insoles, Last Rider, F Fitting  
 Sizes 3 to 8 inc half sizes

Brown Waxy Leather & Black Calf





**623**

Goodyear Welted Heat-Sealed Soles,  
Leather Insoles, Last 97, E Fitting  
Sizes 4 to 11 inc half sizes & 12

*Black Polished Leather & Oxblood Polished Leather*



**LINCOLN**

Goodyear Welted Leather Soles,  
Fully Leather Lined, Leather Insoles, Last Loafer, F Fitting  
Sizes 5 to 13 inc half sizes

*Black Polished Calf & Dark Brown Suede*



**IMPERIAL**

Goodyear Welted Leather Soles,  
Fully Leather Lined, Leather Insoles, Last College, F Fitting  
Sizes 6 to 11 inc half sizes, 12 & 13

*Black Polished Calf, Dark Brown Suede & Brown Suede*



**ETON**

Goodyear Welted Leather Soles,  
Fully Leather Lined, Leather Insoles, Last O19, F Fitting  
Sizes 5 to 13 inc half sizes

*Brown Suede & Black Polished Leather*

*The Original Loake Loafer*

**BRIGHTON**

Goodyear Welted Leather Soles,  
Leather Insoles, Last 97, E Fitting  
Sizes 4 to 11 inc half sizes & 12

*Oxblood Polished Leather & Black Polished Leather*



*Featured Style*  
**BRIGHTON in OXBLOOD POLISHED LEATHER**  
*See Opposite*



*Featured Style*  
**SPRINT in NAVY SUEDE**  
*See Below*

## DESIGN LOAKE IS FOR THOSE WHO WANT A COMBINATION OF CONTEMPORARY STYLING AND TRADITIONAL LOAKE CRAFTSMANSHIP.

design**Loake**<sup>®</sup>

These shoes are designed and engineered in Kettering and made in either our high-grade factory in India or Portugal, using similar materials and finishing techniques as used in our Northamptonshire factory.

Every pair of Design Loake shoes is supplied with a cleaning cloth to help you keep your shoes in pristine condition.



*\*New Colour*

### BANNISTER

Cemented Trainer Soles, Fully Leather Lined, Last Trainer, F Fitting  
 Sizes 40 to 47 full sizes only

*\*Tan Suede, Navy Suede, Dark Brown Suede, Cedar Burnished Calf & Hand Painted Navy Calf*



### SPRINT

Rubber Cup Soles, Fully Leather Lined, Comfort Leather Footbed, Last Sneaker, F Fitting  
 Sizes 40 to 47 full sizes only

*Hand Painted Navy Calf, Soft White Calf, Hand Painted Dark Brown Calf,  
 Hand Painted Chestnut Calf & Navy Suede*



### OWENS *(New Style)*

Rubber Cup Soles, Fully Leather Lined, Comfort Leather Footbed, Last Sneaker, F Fitting  
 Sizes 40 to 47 full sizes only

*Brush Painted Chestnut Calf, Stone Suede,  
 Tan Suede & Navy Suede*

BEGINNING WITH A BLANK CANVAS OF NATURAL LEATHER, OUR MASTER CRAFTSMEN CAREFULLY APPLY EACH STROKE OF COLOUR BY HAND, ENSURING EACH PAIR IS UNIQUE.

An ode to design, craftsmanship and attention-to-detail, the Loake Artist Collection celebrates creativity and artistry. Built on the new F-fitting 'Artist' Last, shoes in this contemporary Goodyear Welted range offer a sleek profile and feature green 'distressed' leather soles with a quarter rubber tip, however, the true beauty of these shoes is in the way they are finished.

## The Artist Collection



HEPWORTH

Goodyear Welted Leather/Rubber Soles, Fully Leather Lined, Comfort Leather Insoles, Last Artist, F Fitting  
Sizes 7 to 11 inc half sizes  
*Brush Painted Chestnut Calf*



HIRST

Goodyear Welted Leather/Rubber Soles, Fully Leather Lined, Comfort Leather Insoles, Last Artist, F Fitting  
Sizes 7 to 11 inc half sizes  
*Brush Painted Chestnut Calf & Brush Painted Burgundy Calf*



STUBBS

Goodyear Welted Leather/Rubber Soles, Fully Leather Lined, Comfort Leather Insoles, Last Artist, F Fitting  
Sizes 7 to 11 inc half sizes  
*Brush Painted Burgundy Calf & Brush Painted Chestnut Calf*



LOCKE *(New Style)*

Goodyear Welted Leather/Rubber Soles, Fully Leather Lined, Comfort Leather Insoles, Last Saddle, F Fitting  
Sizes 7 to 11 inc half sizes  
*Brush Painted Chestnut Calf & Brown Burnished Suede*

Featured Style  
HIRST *in* BRUSH PAINTED CHESTNUT CALF

See Opposite





*\*New Colour*

**SHARP**

Goodyear Welted Leather Soles,  
Leather Insoles, Last Ridge, F Fitting  
Sizes 6 to 11 inc half sizes, 12 & 13

*\*Dark Brown Polished Calf & Black Polished Leather*



**LARCH**

Goodyear Welted Leather/Rubber Soles,  
Fully Leather Lined, Leather Insoles, Last Ridge, F Fitting  
Sizes 6 to 11 inc half sizes & 12

*Black Calf & Brush Painted Chestnut Calf*



**HANNIBAL**

Goodyear Welted Leather Soles,  
Fully Leather Lined, Leather Insoles, Last Ridge, F Fitting  
Sizes 6 to 11 inc half sizes, 12 & 13

*Hand Painted Chestnut Calf & Black Calf*



**DRAKE**

Goodyear Welted Leather Soles,  
Fully Leather Lined, Leather Insoles, Last Claridge, F Fitting  
Sizes 6 to 11 inc half sizes, 12 & 13

*Tan Burnished Calf & Black Calf*



**FEARNLEY**

Goodyear Welted Leather Soles,  
Fully Leather Lined, Leather Insoles, Last Claridge, F Fitting  
Sizes 6 to 11 inc half sizes, 12 & 13

*Tan Burnished Calf & Burgundy Burnished Calf*



**KERRIDGE**

Goodyear Welted Shadow Rubber Soles,  
Fully Leather Lined, Leather Insoles, Last Claridge, F Fitting  
Sizes 6 to 11 inc half sizes, 12 & 13

*Cedar Burnished Calf, Black Calf & Tan Burnished Calf*



**THOMPSON**

Goodyear Welted Leather Soles,  
Fully Leather Lined, Leather Insoles, Last Claridge, F Fitting  
Sizes 6 to 11 inc half sizes & 12

*Tan Burnished Calf / Navy Suede*



**KRUGER**

Goodyear Welted Leather Soles,  
Fully Leather Lined, Leather Insoles, Last Ridge, F Fitting  
Sizes 6 to 11 inc half sizes & 12

*Black Calf, Burgundy Burnished Calf & Tan Burnished Calf*



**FOLEY**

Goodyear Welted Leather Soles,  
Fully Leather Lined, Leather Insoles, Last Ridge, F Fitting  
Sizes 6 to 11 inc half sizes, 12 & 13

*Black Calf, Cedar Burnished Calf & Tan Burnished Calf*



**CLINT**

Goodyear Welted Leather Soles,  
Fully Leather Lined, Leather Insoles, Last Ridge, F Fitting  
Sizes 6 to 11 inc half sizes, 12 & 13

*Black Polished Leather*

*A Versatile & Timeless Style*

**HOSKINS**

Goodyear Welted Shadow Rubber Soles,  
Fully Leather Lined, Leather Insoles, Last Claridge, F Fitting  
Sizes 6 to 11 inc half sizes & 12

*Tan Burnished Calf, Black Calf & Dark Brown Burnished Calf*



OUR VIPER SOLE RANGE FEATURES ALL THE LUXURIOUS CRAFTSMANSHIP OF A FORMAL GOODYEAR WELTED SHOE WITH THE COMFORT OF A TRAINER.

## Viper Sole

Made on our 'Viper' last. All styles within our Viper Sole range features a classic English design of standard length, with a rounded toe shape.

This is a G fitting last, and as such will offer more room within the shoe for customers with wider feet. Customers who normally wear F width styles may wish to consider a half size smaller with this last.



### PYTHON

Goodyear Welted Viper Soles,  
Fully Leather Lined, Leather Insoles, Last Viper, G Fitting  
Sizes 6 to 11 inc half sizes & 12  
*Tan Suede*



### MAMBA

Goodyear Welted Viper Soles,  
Fully Leather Lined, Leather Insoles, Last Viper, G Fitting  
Sizes 6 to 11 inc half sizes & 12  
*Hand Painted Chestnut Calf*

*Optimum Comfort to take you seamlessly  
from Work to the Weekend*

### COBRA

Goodyear Welted Viper Soles,  
Fully Leather Lined, Leather Insoles, Last Viper, G Fitting  
Sizes 6 to 11 inc half sizes & 12

*Tan Burnished Calf*



TRADITIONAL CRAFTSMANSHIP AND  
STYLING ARE COMBINED IN A RANGE  
OF LOAKE ESSENTIALS.



There are no rules broken here; quite simply, Loake aims to offer timeless designs that don't compromise quality, performance or good looks.

Like the Design Loake range, these shoes are designed and engineered in Kettering and made in India, using the same Goodyear Welted construction as in our Northamptonshire factory.



**300**  
*F Fitting*

Goodyear Welted Rubber Soles, Fully Soft Leather Lined,  
Comfort Leather Insoles, Last 3625, F Fitting  
Sizes 6 to 11 inc half sizes, 12 & 13  
*Black Polished Leather*



**300**  
*G Fitting*

Goodyear Welted Rubber Soles, Fully Soft Leather Lined,  
Comfort Leather Insoles, Last 3625, G Fitting  
Sizes 6 to 11 inc half sizes, 12 & 13  
*Black Polished Leather*



**301**

Goodyear Welted Rubber Soles, Fully Soft Leather Lined,  
Comfort Leather Insoles, Last 3625, F Fitting  
Sizes 6 to 11 inc half sizes, 12 & 13\*

*\*Dark Brown Suede & Black Polished Leather*

*\*Dark Brown Suede available in sizes 7 to 11 inc half sizes*



**356**

Goodyear Welted Rubber Soles, Fully Soft Leather Lined,  
Comfort Leather Insoles, Last Saddle, F Fitting  
Sizes 6 to 11 inc half sizes & 12

*Dark Brown Suede & Black Polished Leather*

*Featured Style*  
**356 in BLACK POLISHED LEATHER**  
*See Opposite*



*\*New Colour*

302

Goodyear Welted Rubber Soles, Fully Soft Leather Lined, Comfort Leather Insoles, Last 3625, G Fitting  
Sizes 6 to 11 inc half sizes & 12

*\*Dark Brown Suede & Black Polished Leather*



200

Goodyear Welted Leather Soles, Fully Leather Lined, Leather Insoles, Last 3625, G Fitting  
Sizes 6 to 11 inc half sizes, 12 & 13

*Brown Polished Leather & Black Polished Leather*



202

Goodyear Welted Leather Soles, Fully Leather Lined, Leather Insoles, Last 3625, G Fitting  
Sizes 6 to 11 inc half sizes, 12 & 13

*Brown Polished Leather & Black Polished Leather*



204

Goodyear Welted Leather Soles, Fully Leather Lined, Leather Insoles, Last 3625, F Fitting  
Sizes 6 to 11 inc half sizes & 12

*Black Polished Leather*



205

Goodyear Welted Leather Soles, Fully Leather Lined, Leather Insoles, Last 3625, F Fitting  
Sizes 6 to 11 inc half sizes, 12 & 13

*Black Polished Leather*



GHILLIE

Goodyear Welted Leather Soles, Fully Leather Lined, Leather Insoles, Last 028, F Fitting  
Sizes 5 to 11 inc half sizes & 12

*Black Polished Leather*



*Featured Style*  
300 in BLACK POLISHED LEATHER



Featured Style  
 NICHOLSON in POLO SUEDE  
 See Below



**LOAKE LIFESTYLE OFFERS A MORE RELAXED ALTERNATIVE TO OUR CLASSIC GOODYEAR WELTED FOOTWEAR.**

**Loake**  
*Lifestyle*

With a choice of Boat Shoes, Driving Shoes, Chukka Boots and Loafers, these easy-going non-welting constructions are available in a selection of Leathers and Suedes, offering breathable comfort and an effortless, off-duty style to complete a more traditional wardrobe of shoes.



**DARWIN** *(New Style)*

Cemented Leather Soles, Fully Leather Lined, Cushioned Leather Insoles, Last Origin, F Fitting  
 Sizes 7 to 11 inc half sizes

*Flame Orange Suede, Dark Brown Suede, Navy Suede & Tan Suede*



*\*New Colour*

**DONINGTON**

Moccasin Rubber Driving Soles, Fully Leather Lined, Last Driver, F Fitting  
 Sizes 40 to 47 full sizes only

*\*Brown Oiled Nubuck, Light Blue Suede, Navy Suede & Tan Suede*

*A Warm Weather Essential*

**NICHOLSON**

Moccasin Flexible Leather/Rubber Soles,  
 Fully Leather Lined, Last Joker, F Fitting  
 Sizes 6 to 11 inc half sizes & 12

*Polo Suede & Navy Suede*





**PLYMOUTH**

Moccasin Rubber Soles,  
Last Boat, F Fitting  
Sizes 6 to 11 inc half sizes & 12  
Brown Waxy Leather



**LYMINGTON**

Moccasin Rubber Soles,  
Last Boat, F Fitting  
Sizes 6 to 11 inc half sizes, 12 & 13  
Brown Oiled Nubuck & Navy Suede



**528**

Moccasin White Rubber Deck Soles,  
Fully Leather Lined, Last Boat, F Fitting  
Sizes 6 to 11 inc half sizes & 12  
Cedar Burnished Calf



**522**

Moccasin Heavy-Deck Rubber Soles,  
Fully Leather Lined, Last Boat, F Fitting  
Sizes 6 to 11 inc half sizes, 12 & 13  
Brown Waxy Leather

*For that classic, summer Riviera look,  
that's great both on and off deck!*

**521**

Moccasin Dual Density EVA/Rubber Soles,  
Last Boat, F Fitting  
Sizes 6 to 11 inc half sizes & 12

Navy Nubuck/Brown Waxy Leather, Tan Waxy Leather  
& Burgundy Waxy Leather



**AN ENDURING FAVOURITE AMONG THE SARTORIALLY SAVVY, WITH LONG-LASTING, NATURAL & BIODEGRADABLE SOLES.**

The humble crepe sole provides an unbeatability casual look, with the environmental credentials to boot.

Stemming from natural origins, a traditional process, done by hand, and only using the most essential, biodegradable elements, meaning that when the sole has had their day, they can simply return back to the earth...

*Our Stitch-Down Collection*

**SAHARA**

Stitch-Down TR Rubber Soles,  
Fully Leather Lined, Leather Insoles,  
Last Desert, F Fitting  
Sizes 6 to 11 inc half sizes & 12

Navy Suede, Dark Brown Suede & Tan Suede



**DANIELS (New Style)**

Stitch-Down Crepe Soles, Unlined with  
Leather Collar, Cushioned Leather Insoles,  
Last Quad, F Fitting  
Sizes 40 to 47 full sizes only  
Dark Brown Suede & Tan Suede



**JIMMY (New Style)**

Stitch-Down Crepe Soles, Unlined with  
Leather Collar, Cushioned Leather Insoles,  
Last Quad, F Fitting  
Sizes 40 to 47 full sizes only  
Navy Suede & Tan Suede

**Loake**  
*Lifestyle*



**WOODSTOCK**

Cemented Leather/Rubber Soles, Fully Leather Lined, Cushioned Leather Insoles, Last O26, G Fitting  
 Sizes 6 to 11 inc half sizes & 12  
 Black Calf/Polished Leather & Burgundy Grain Calf/Polished Leather



**ROME**

Flexible Leather/Rubber Soles, Genuine Moccasin Construction, Fully Leather Lined, Last Rome, GX (Extra Wide) Fitting  
 Sizes 6 to 11 inc half sizes & 12  
 Black Nappa Leather & Burgundy Nappa Leather



**SIENA**

Flexible Leather Soles, Genuine Moccasin Construction, Fully Leather Lined, Last Siena, F Fitting  
 Sizes 6 to 11 inc half sizes & 12  
 Black Nappa Leather



**PRINCETON**

Flexible Leather Soles, Genuine Moccasin Construction, Last Prince, F Fitting  
 Sizes 6 to 11 inc half sizes & 12  
 Black Polished Leather & Burgundy Polished Leather

*Dress Shoes*



**BOW**

Cemented Leather Soles, Fully Leather Lined, Leather Insoles, Last Claridge, F Fitting  
 Sizes 6 to 11 inc half sizes & 12  
 Black Patent Leather



**PATENT**

Cemented Leather Soles, Fully Leather Lined, Leather Insoles, Last Claridge, F Fitting  
 Sizes 6 to 11 inc half sizes & 12  
 Black Patent Leather



*Featured Style*  
**PATENT in BLACK PATENT LEATHER**  
*See Opposite*

Available from August 2021

## LET OUR QUALITY, CONSIDERED DESIGNS TAKE YOU THROUGH THE NEW SEASON AND BEYOND.

A carefully crafted Hand-Painted collection with a unique finish; a sole designed to make a statement; and trusted classics re-imagined in new colourways – your Autumn Winter 2021 arrivals are here...



**Loake**  
SHOEMAKERS

### KILMER (New Style from August)

Goodyear Welted Heat-Sealed Soles,  
Fully Leather Lined, Leather Insoles, Last Heat, F Fitting  
Sizes 6 to 11 inc half sizes & 12

Burgundy Polished Leather & Black Polished Leather



**Loake**  
SHOEMAKERS

### NIRO (New Style from August)

Goodyear Welted Heat-Sealed Soles,  
Fully Leather Lined, Leather Insoles, Last Heat, F Fitting  
Sizes 6 to 11 inc half sizes & 12

Black Waxy Leather, Burgundy Polished Leather  
& Brown Oiled Nubuck



**Loake**  
SHOEMAKERS

### MCCAULEY (New Style from August)

Goodyear Welted Heat-Sealed Soles,  
Fully Leather Lined, Leather Insoles, Last Heat, F Fitting  
Sizes 6 to 11 inc half sizes & 12

Brown Oiled Nubuck & Black Waxy Leather



**Loake**  
SHOEMAKERS

### BUSCOT (New Style from August)

Goodyear Welted Loake Rubber Soles, Fully Leather Lined,  
Comfort Leather Insoles, Last Claridge, F Fitting  
Sizes 6 to 11 inc half sizes & 12

Dark Brown Leather & Black Leather



**Loake 1880**

### BEDALE (New Colour from August)

Goodyear Welted Victory Rubber Soles,  
Fully Leather Lined, Leather Insoles, Last Pennine, G Fitting  
Sizes 7 to 11 inc half sizes & 12

Burgundy Chromexcel Leather



**Loake 1880**

### HEBDEN (New Colour from August)

Goodyear Welted Victory Rubber Soles,  
Fully Leather Lined, Leather Insoles, Last Pennine, G Fitting  
Sizes 7 to 11 inc half sizes & 12

Burgundy Chromexcel Leather

*The true beauty of these shoes lies  
in the way they are finished*

### FREUD (New Style from August)

Goodyear Welted Lightweight Commando Soles,  
Fully Leather Lined, Comfort Leather Insoles,  
Last Artist, F Fitting  
Sizes 7 to 11 inc half sizes & 12

Brush Painted Chestnut Calf  
& Hand Painted Oxblood Grain Calf



design**Loake**



design**Loake**

### REYNOLDS (New Style from August)

Goodyear Welted Lightweight Commando Soles,  
Fully Leather Lined, Comfort Leather Insoles,  
Last Artist, F Fitting  
Sizes 7 to 11 inc half sizes & 12

Brush Painted Chestnut Calf  
& Hand Painted Oxblood Grain Calf



design**Loake**

### HUXLEY (New Style from August)

Goodyear Welted Lightweight Commando Soles,  
Fully Leather Lined, Comfort Leather Insoles,  
Last Artist, F Fitting  
Sizes 7 to 11 inc half sizes & 12

Brush Painted Chestnut Calf  
& Hand Painted Oxblood Grain Calf

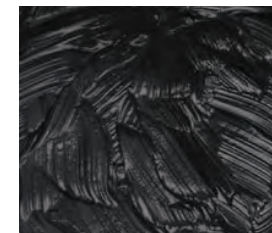


*Our Shoe Care Range*

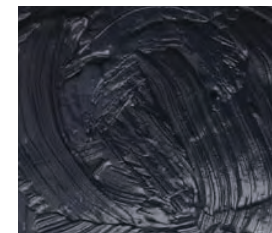
**WITH THE CORRECT CARE AND MAINTENANCE YOUR LOAKE SHOES WILL RETAIN THEIR EXCELLENT APPEARANCE AND COMFORT FOR YEARS TO COME.**

Leather is a natural product so your shoes will benefit from regular application of a good quality shoe cream or wax polish. This will help to moisturise the leather, keeping it supple and preventing drying or cracking.

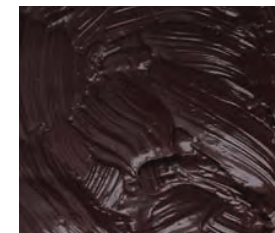
The wax polish will also provide some protection from staining and bring a shine to the uppers. Before polishing, make sure to wipe over your shoes with a dry cloth first to remove any surface dirt.



**LEATHER CREAM**  
*Black*



**LEATHER CREAM**  
*Navy*



**LEATHER CREAM**  
*Burgundy*



**LEATHER CREAM**  
*Neutral*



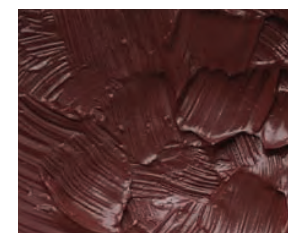
**LEATHER CREAM**  
*Tan*



**LEATHER CREAM**  
*Brown*



**LEATHER CREAM**  
*Dark Brown*



**LEATHER CREAM**  
*Conker Brown*



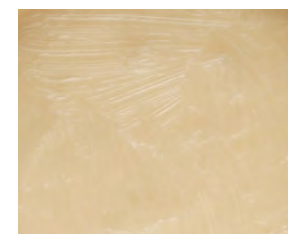
**SUEDE CLEANER**



**SUEDE PROTECTOR**



**SELVYT/LOAKE CLOTH**



**OILED LEATHER WAX**



**CEDAR SHOE TREE**



**TRAVEL SHOE TREE**



**LUXURY VALET BOX**

We offer two types of shoe trees:

**Cedar Shoe Tree:** Made in aromatic Cedar in UK sizes: 5, 6, 7, 8, 9, 10, 11 & 12/13 to protect your shoes and help them to maintain their shape after wear.

**Travel Shoe Tree:** Made in Beechwood with slits to make them lighter and more beathable. Our Travel Shoe Tree is available in 4 different sizes. With engraved Loake branding to enhance your display of Loake Shoes.

**The Loake Luxury Valet Box** contains: Cleaning cloth, Metal shoe horn, Oiled/Waxy leather protector, Suede cleaner, Suede protector, 6x Saphir/Loake Shoe creams: *Black, Brown, Dark Brown, Conker Brown, Tan and Neutral.* 2x Small applicator brushes and 2x Large polishing brushes.



HENRY  
Black



HENRY  
Tan



HENRY  
Dark Brown



HENRY  
Mahogany



HENRY  
Conker Brown



HENRY  
Burgundy



HENRY  
Tan Grain



HENRY  
Dark Brown Grain



HENRY  
Mahogany Grain



WILLIAM  
Navy Suede



WILLIAM  
Green Suede



WILLIAM  
Tan Suede



WILLIAM  
Brown Suede



WILLIAM  
Dark Brown Suede

**Please note:**  
Our Henry belts are handmade in Northamptonshire to match our calf leathers. The William suede belts are handmade in India using the same suede as all of our suede shoes.

Due to the nature of our belt production, you will need to add two inches to your trouser waist size when selecting your belt size.

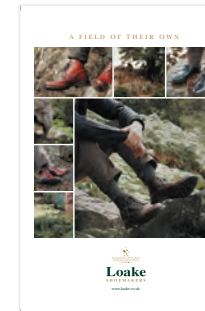
All of our mens leather belts are measured in inches and are available in 32in, 34in, 36in, 38in, 40in, 42in and 44in.

*Our Retail Support Range*

**LOAKE OFFERS A COMPREHENSIVE RANGE OF MATERIAL FOR RETAILERS TO USE WITHIN THEIR SHOP(S).**

From large six-tiered display units to our smaller counter top display items, some of which are supplied free of charge, we would like to offer you the ability to showcase our shoes in the best way. Also available to retailers is our latest marketing imagery in high resolution.

Please speak to your local representative or contact Loake directly by emailing [press@loake.co.uk](mailto:press@loake.co.uk) for further details.



**SHOWCARDS**

Our A4 showcards are suitable for the entire Loake range. A1 posters are also available.

XSTRUTLIL / XSTRUTA4 / XSTRUTART



**CUT-UP SHOES**

We can supply cut-up shoes to illustrate the classic Goodyear Welted construction or our unique 'Evolution' Comfort System.



**DISPLAY BLOCK**

Made from sustainable wooden Oak, our new tabletop display blocks will enhance any displays you may have.

XF20POSBLOCK

**DISPLAY UNITS**

Loake display units come in two sizes:



*\*New Design*

A two-tiered unit that can accommodate up to three styles or a larger six-tiered unit.



The six-tiered unit can either be secured to a wall or attached back-to-back to another unit to make a free standing tower display.



Shoe Name	Page	Last	Fit	Shoe Name	Page	Last	Fit	Shoe Name	Page	Last	Fit
200	30	3625	G	Chester (Rub)	10	O24	F	Locke	22	Saddle	F
202	30	3625	G	Clint	25	Ridge	F	Lymington	34	Boat	F
204	30	3625	F	Cobra	26	Viper	G	Lytham	9	Bullet	F
205	30	3625	F	Daniels	35	Quad	F	Mamba	26	Viper	G
290	17	O10	F	Darwin	33	Origin	F	Medway	6	River	F
300	29	3625	F	Donington	33	Driver	F	Nicholson	32	Joker	F
300	29	3625	G	Drake	24	Claridge	F	Owens	21	Sneaker	F
301	29	3625	F	Edward	10	Pennine	G	Patent	36	Claridge	F
302	30	3625	G	Elgin	16	Chancery	G	Pimlico	9	Capital	F
356	29	Saddle	F	Epsom	16	O24	F	Plymouth	34	Boat	F
521	34	Boat	F	Eton	18	O19	F	Princeton	36	Prince	F
522	34	Boat	F	Evans	7	Bullet	F	Python	26	Viper	G
528	34	Boat	F	Fearnley	24	Claridge	F	Rivington	9	O26	G
623	18	97	E	Fleet	6	Capital	F	Roehampton	12	Capital	F
747	15	3625	F	Foley	25	Ridge	F	Rome	36	Rome	GX
771	16	3625	F	Gable	16	Claridge	G	Royal	17	1639	F
806	15	Claridge	F	Ghillie	30	O28	F	Russell	8	College	F
Aldwych (Lea)	5	Capital	F	Glendale	11	Pennine	G	Sahara	35	Desert	F
Aldwych (Rub)	5	Capital	F	Hannibal	24	Ridge	F	Sedbergh	12	O26	G
Aldwych (Rub)	5	Capital	G	Hebden	12	Pennine	G	Sharp	24	Ridge	F
Bannister	21	Trainer	F	Hepworth	22	Artist	F	Siena	36	Siena	F
Badminton	10	O26	G	Hiker	12	O24	F	Smith	15	Matrix	F
Bedale	11	Pennine	G	Hirst	22	Artist	F	Sovereign	17	1639	F
Birkdale	10	Bullet	F	Hoskins	25	Claridge	F	Sprint	20	Sneaker	F
Blenheim	17	O10	F	Imperial	18	College	F	Strand	6	Capital	F
Bow	36	Claridge	F	Jimmy	35	Quad	F	Stubbs	22	Artist	F
Brighton	18	97	E	Jones	15	Matrix	F	Thompson	25	Claridge	F
Buckingham	6	Capital	F	Kerridge	24	Claridge	F	Troon	10	Bullet	F
Burford	11	O24	F	Keswick	11	O24	F	Wadham	16	Chancery	G
Cannon	6	Capital	F	Kruger	25	Ridge	F	Waverley	16	1639	F
Chatterley	17	Rider	F	Larch	24	Ridge	F	Wolf	11	O24	F
Chatsworth	9	Jockey	G	Laxford	7	River	F	Woodstock	36	O26	G
Chester (Lea)	10	O24	F	Lincoln	18	Loafer	F				

MENS SHOES SIZE CHART - *Approximate Conversion*

USA	6	½	7	½	8	½	9	½	10	½	11	½	12	½	13	½	14
UK	5	½	6	½	7	½	8	½	9	½	10	½	11	½	12	½	13
EU	38	39	40	41	42	43	44	45	46	47	48						



*Unique Boot Works*

#### **Head Office and Customer Services Enquiries**

Loake Bros Ltd.  
 Unique Boot Works,  
 Wood Street, Kettering,  
 Northamptonshire  
 NN16 9SN  
 Telephone: +44 (0) 1536 415 411  
 Facsimile: +44 (0) 1536 410 190  
 Email: [enquiries@loake.co.uk](mailto:enquiries@loake.co.uk)

#### **UK and International Sales**

Telephone: +44 (0) 1536 415 411  
 Facsimile: +44 (0) 1536 410 190  
 Email: [sales@loake.co.uk](mailto:sales@loake.co.uk)  
 Website: [www.loake.com](http://www.loake.com)

#### **Marketing**

Telephone: +44 (0) 1536 315 904  
 Email: [press@loake.co.uk](mailto:press@loake.co.uk)

Although every effort is made to maintain the quality of information provided in this catalogue, Loake cannot guarantee and assumes no legal liability for the accuracy and completeness of the information provided, it is for general guidance only.

The copyright of all content is owned by Loake and no part of the catalogue may be changed, reproduced, stored in or transmitted on any website or medium without the prior written permission of Loake.

The colours represented in this catalogue are as accurate as possible, but due to the limitations of the printing process, actual colours may vary.

Photography: Steve Carse - [www.infinityphoto.co.uk](http://www.infinityphoto.co.uk)